



Stevens County Barn Quilt Trail. Summer, 2025

Big news!

A book titled *"Barn Quilts of Stevens County, and the people who live here"* was published last December. It is authored by Ward Voorhees, with assistance from Karla Overland, and Isaac Overland. It can be purchased at the Stevens County History Museum, or Amazon.com, with either a hard or soft cover. All profits from this book go to the Stevens County Historical Society.

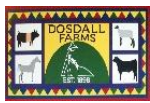
And some new Barn Quilts have been added to the Stevens County Barn Quilt Trail. The numbers on the following maps refer to the approximate location where all Barn Quilts are located. The exact location, with owner's names and other information, is found in the corresponding numbered list below.

Finding some of these Barn Quilts may be challenging. Some are only 2 feet square. But all are visible from a public street/road. And that's the fun of the Trail...it's a journey and a destination, as you might travel through parts of our County that you have never experienced before. You can drive, hike, bike the Trail at your own pace and whenever you want.

You may photograph the Barn Quilts. However, do not enter onto private property unless noted otherwise in the listing of individual places.

Questions? Contact Ward Voorhees at 320-334-2079 or wvoorhees4@gmail.com.

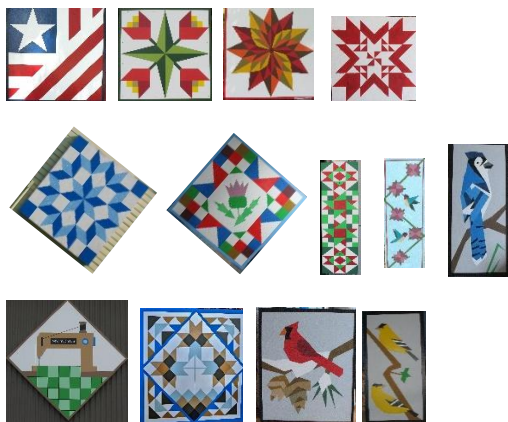
Enjoy!



1. Dosdall Farm. John and Diane Dosdall. 24347 400th Ave., Hancock, MN. Printed by Image Xperts.



2. Waving US Flag, 39 Star Flag, Spirit of 75 Flag. Clayton Rasmusson. 42487 230th St. Hancock, MN. Painted by Jeane Bearson and Dan Granger. May enter property for a closer.



3. Folded US Flag, Dutch Tulips, 12-point Star, Grand Daughters Love, Carpenter's Wheel, Scottish Thistle, Xmas Wrap, Humming Birds, Blue Jay, Sew Much Fun, Mother Daughter Patchwork, Cardinal, Gold Finch. Ward and Carol Voorhees. 44724 Hwy 28. Morris, MN. Painted by Cindy Haffner, Ward Voorhees, Sophie Lyseng. May enter property for a closer look at Barn Quilts.



4. School Bell, Overall Sam, Sunbonnet Sue, Bee 1, Bee 2. Vicky Dosdall. 44725 175th St., Morris, MN. Painted by Wayne Lesmeister and Cindy Haffner. Sam and Sue on "East" building



5. Maple Leaf, Cardinal, Proud Evergreen (on barn), Horse. Wayne and Jeanne Lesmeister. 46298 180th St., Morris, MN. Painted by Wayne Lesmeister. (Exit Hwy 59, enter property by Tree sign. Follow field road north to fence line, turn left to exit property)



6. Page Lake Sunset, "W". Cheryl and Darrell Walton. 41922 270th St. Hancock, MN. Painted by Cheryl Walton. May enter property.



7. Stars and Stripes. Diane and Dave Boettcher. 15622 480th Ave. Morris, MN. Painted by Cindy Heffner.



8. Pin Wheel, Twisted Tiles. Jeanne and Dale Ennen. 51188 150th St. Donnelly, MN. Painted by Jeanne and her family.



9. Undecided. Maria and Keith Marty. 209 West 2nd Ave S. Chokio, MN. Painted by Maria Marty. (on garden shed in back yard). [See Chokio map.](#)



10. Rodeo Quilt. Bernie and Lois Van Eps. 107 West 4th Ave S. Chokio, MN. Artist unknown. [See Chokio map.](#)



11. Cake, Pine Tree, Wind Mill. Joe and Karen DeVita. 31206 610th Ave. Chokio, MN. Painted by Monica Kleindl. (May enter onto property).



12. Rooster. Brian and Monica Kleindl. 31058 600th Ave. Chokio, MN. Painted by Monica Kleindl. View from gravel road on north side of farmstead.



13. Celtic Tree of Life, St. Brigid Cross. Craig and Joanie Murphy. 51487 320th St., Morris, MN. Painted by Cindy Heffner and Audrey Arner.



14. Abram's Quilt, Play House Quilt. Pat Hein. 900 West 4th St. Morris, MN. Unknown artist. (may enter onto property). [See Morris map.](#)



15. Coffee Cups. Common Cup Coffee House. 501 Atlantic Ave, on West 5th street side. Morris, MN. Painted by Cindy Haffner. [See Morris Map.](#)



16. Saw Tooth Star. Viola Speer. 401 Birch Ave. Morris, MN. Painted by Barb Hensch. [See Morris map.](#)



17. Native American, UMN Morris, Agriculture. University of Minnesota Morris. Alumni Drive on north edge of campus. Barn Quilts on white "Seed House". Painted by UMM students. [See Morris map.](#)



18. Mariner's Compass. Dan and Rose Murphy. 3 Northridge Drive. Morris, MN. Painted by Rose Murphy. [See Morris map.](#)



19. Gardener's Prize, Twisted Tiles. Randy and Johnny Luthi. 28876 387th Ave. Hancock, MN. Painted by Johnny and Randy Luthi. On small out buildings. Go about 3 miles east of Hancock Concrete on County 8 (about 1 mile into Pope Co.)



20. Hidden Star. George and Mary Ann Nelson 55103 220th St. Alberta, MN. Painted by Mary Ann Nelson. Visible from east, on white building beyond and behind silo.



21. 8-Point Star, John Deere. Tom and Denise Olson. 19315 County Road 1. Morris, MN. Painted by Denise Olson.



22. No Name # 3. Darrel and Eileen Bliss. 24034 500th Ave. Morris, MN. Painted by Eileen Bliss.



23. Hidden Star. Kurt and Sue Gartland. 606 West 5th St. Morris, MN. Painted by Sue Gartland. On garden shed in back yard. [See Morris map.](#)



24. National Park Service design by Susan Davis. Painted by Ward Voorhees. [See Morris map and Pomme de Terre map.](#)



25. Mount Rushmore National Monument. Sponsored by Morris and Associates. Painted by Denise Olson. [See Morris map and Pomme de Terre map.](#)



26. Zion National Park. Sponsored by Morris American Legion Post 29. Painted by Beth Minners. [See Morris map and Pomme de Terre map.](#)



27. Devils Tower National Monument. Sponsored by Federated Telephone. Painted by Jeanne Ennen. [See Morris map and Pomme de Terre map.](#)



28. Everglades National Park. Sponsored by Morris Lions Club. Painted by Cindy Haffner. [See Morris map and Pomme de Terre map.](#)



29. Mammoth Cave National Park. Sponsored by Riley Bros. Construction. Painted by Kathy Eystad. [See Morris map and Pomme de Terre map.](#)



30. Badlands National Park. Sponsored by Morris Kiwanis Club. Painted by Cindy Haffner. [See Morris map and Pomme de Terre map.](#)



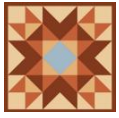
31. Grand Tetons National Park. Sponsored by Julie's Eats and Treats. Painted by Cindy Haffner. [See Morris map and Pomme de Terre map.](#)



32. Redwood National Park. Sponsored by Morris Fraternal Order of Eagles. Painted by Carrie Redden. [See Morris map and Pomme de Terre map.](#)



33. Big Bend National Park. Sponsored by Morris Dental Depot. Painted by Sue Gartland. [See Morris map and Pomme de Terre map.](#)



34. **Arches National Park.** Sponsored by B Inspired. Painted by Kathy Bahr. See Morris map and Pomme de Terre map.



35. **Grand Canyon National Park.** Sponsored by Morris VFW Post 29. Painted by Tisha Woodke. See Morris map and Pomme de Terre map.



36. **Great Sand Dunes National Park.** Sponsored by Riverview Dairy. Painted by Randy Luthi. See Morris map and Pomme de Terre map.



37. **Crater Lake National Park.** Sponsored by Morris Women of Today. Painted by Monica Sleiter. See Morris map and Pomme de Terre map.



38. **Yosemite National Park.** Sponsored by Morris Masonic Lodge 133. Painted by Cindy Haffner. See Morris map and Pomme de Terre map.



39. **Isle Royale National Park.** Sponsored by Heartland Chevrolet. Painted by Cindy Haffner. See Morris map and Pomme de Terre map.



40. **Bryce Canyon National Park.** Sponsored by Edward Jones, Anthony Harris. Painted by Cindy Haffner. See Morris map and Pomme de Terre map.



41. **Theodore Roosevelt National Park.** Sponsored by Morris Dental Depot. Painted by Cindy Haffner. See Morris map and Pomme de Terre map.



42. **Glacier National Park.** Sponsored by GFWC Morris Students Club. Painted by Sue Gartland. See Morris map and Pomme de Terre map.



43. **Great Smokey Mountains National Park.** Sponsored by Morris Fraternal Order of Eagles. Painted by Johnny Luthi. See Morris map and Pomme de Terre map.



44. **Petrified Forest National Park.** Sponsored by Morris Knights of Columbus. Painted by Cindy Haffner. See Morris map and Pomme de Terre map.



45. **Black Canyon of the Gunnison National Park.** Sponsored by West Central Environmental Consulting. Painted by Cindy Haffner. See Morris map and Pomme de Terre map.



46. **Denali National Park.** Sponsored by Fluegel Anderson Law. Painted by Eileen Bliss. See Morris map and Pomme de Terre map.



47. **Death Valley National Park.** Sponsored by Morris Kiwanis Club. Painted by Barb Tomoson. See Morris map and Pomme de Terre map.



48. **Voyageurs National Park.** Sponsored by Riley Bros. Construction. Painted by Cindy Haffner. [See Morris map and Pomme de Terre map.](#)



49. **Olympic National Park.** Sponsored by Old # 1 Bar and Grill. Painted by Cindy Haffner. [See Morris map and Pomme de Terre map.](#)



50. **Yellowstone National Park.** Sponsored by Stevens Community Medical Center. Painted by Cindy Haffner. [See Morris map and Pomme de Terre map.](#)



51. **Rocky Mountain National Park.** Sponsored by Morris Lions Club. Painted by Mary Ann Nelson. [See Morris map and Pomme de Terre map.](#)



52. **Sequoia National Park.** Sponsored by Federated Telephone. Painted by Barb Tomoson. [See Morris map and Pomme de Terre map.](#)

53. Removed from Trail.



54. **Mariner's Compass.** Glen and Barb Tomoson. 301 Ward St. Alberta, MN. Painted by Barb Tomoson. [See Alberta map.](#)



55. **Farmer's Star.** Gary and Rose Wagner. 45511 State Hwy 28. Morris, MN. Painted by Rose Wagner. Building on bluff overlooking the river, south side of Highway 28.



56. **GFWC Symbol.** General Federation of Women's Club (Morris Students Club). Painted by Ward Voorhees. Rest Cottage on County Fair Grounds. [See Morris Map.](#)



57. **Unknown, Twisted Tiles, Folded US Flag.** Pete and Katie Boyle. 24936 State Hwy 9. Morris, MN. Painted by Yadira Lara. On barn at bottom of hill.



58. **Unknown.** Leana and Bill Telkamp. 5 Highland Drive. Morris, MN. Painted by Leana Telkamp. [See Morris Map](#)



59. **Folded US Flag.** American Legion Post 29, on rear deck. 507 Pacific Ave. Morris, MN, Painted by Angela and Allison Albrect and Mara DeRung, Swan Lake 4-H Club. [See Morris Map.](#)



60. **Our House of 4.** Cheryl and Monroe Estenson. 311 Pacific Ave. Morris, MN. Painted by Cheryl Estenson. [See Morris Map.](#)



61. Sunflower. Mary and Tom Holm. 20709 464th Ave. Morris, MN. On garage. View from Highway 28/59 across from Mohr Plumbing, second house from west end of private street. Painted by Cindy Haffner. [See Morris Map.](#)



62. Ohio Star with Minneapolis Moline Logo. Dennis and Connie Solvie. 23406 410th Ave. Morris, MN. Painted by Cindy Haffner.



63. Ohio Star with International Harvester Logo. Jonathon and Christina Pearson. 39818 Pope County Road 18, Cyrus, MN (extension of Stevens County Road 10, about ¼ mile into Pope County.) Painted by Christine Pearson.



64. US Flag, Star Block, Golden Retriever, Truck and Tree, Hidden Star, Rose. Kathy and Jamey Eystad. 301 Pacific Ave. Donnelly, MN. Painted by Kathy Eystad and Cindy Haffner. [See Donnelly Map.](#)



65. Unknown. Mary Jo Brown. 24430 County Road 1. Hancock, MN. Painted by Jeanne Bearson.



66. Missouri Puzzle. Bernie and Robert Eystad. 501 Edinborough Ave. Donnelly, MN. Painted by Cindy Haffner. [See Donnelly Map.](#)



67. US Flag. Gary and Annette Kleindl. 15 Westwood Acres. Morris, MN. Painted by Cindy Haffner. [See Morris Map.](#)



68. Bill Myers Memorial Flag. Legacy Assisted Living. 622 E. 7th St. Morris, MN. View from Columbia Ave on back of Legacy Building. Painted by Jolynn Warnes. [See Morris map.](#)



69. Mariner's Compass. Marlys Buntge. 502 West 10th St. Morris, MN. Artist unknown. [See Morris Map.](#)



70. Love Blossom, Sun Flowers, Double Aster. Rachel Michaelson. 116 South Oregon Ave. View from road/alley behind South Oregon Ave. Painted by Jeanne Bearson. [See Morris Map.](#)



71. Tree of Knowledge. Morris Public Library. 102 East 6th St. Morris, MN. Painted by University of MN Morris students. [See Morris Map.](#)



72. Modified Twisted Tiles. Stevens County Developmental Achievement Center. 203 Green River Road. Painted by University of MN Morris students.



73. Historic Railroad. Stevens County Historical Society one room school house on Stevens County Fairgrounds. 400 Fairgrounds Road. Morris, MN. Painted by University of MN Morris students. [See Morris Map.](#)



74. Bayer's Paw. Stan and Eileen Bayer. 17461 State Hwy 59. Morris, MN. Painted by Jan Asmus.



75. US Flag. Roger and Mary Hill. 62384. 220th St. Chokio, MN. Painted by Roger Hill.



76. Redwood. Jo Solvie. 10 North Court. Morris, MN. Painted by Cindy Haffner. On shed in back yard. [See Morris Map.](#)



77. Twisted Tile. Ron and Janet Bouressa. 24039 470th Ave. Morris, MN.



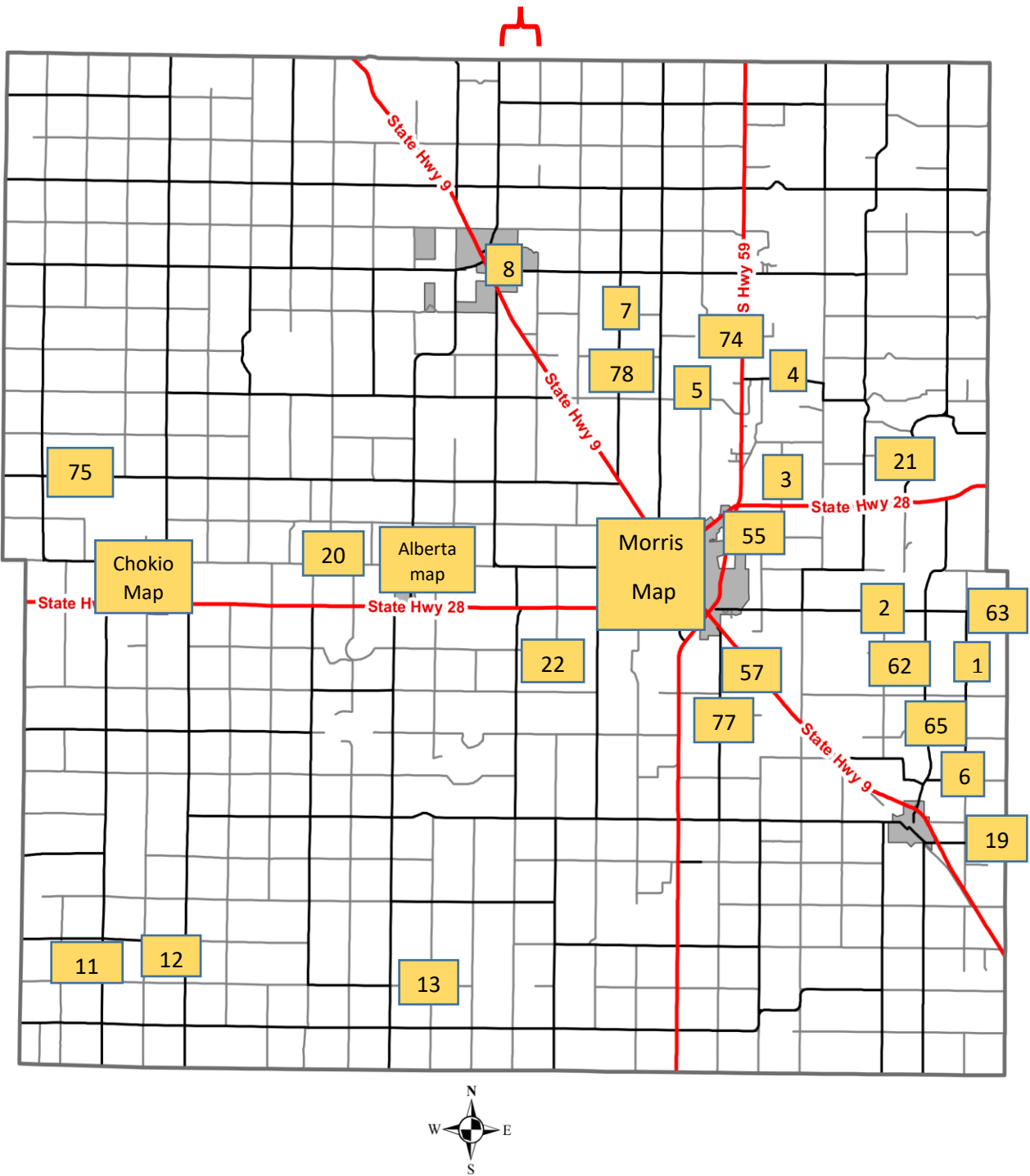
78. Unknown and Sun Shine. Michael and Martha Hanson. 18655 480th Ave. Morris, MN. Painted by Sara Spohr.



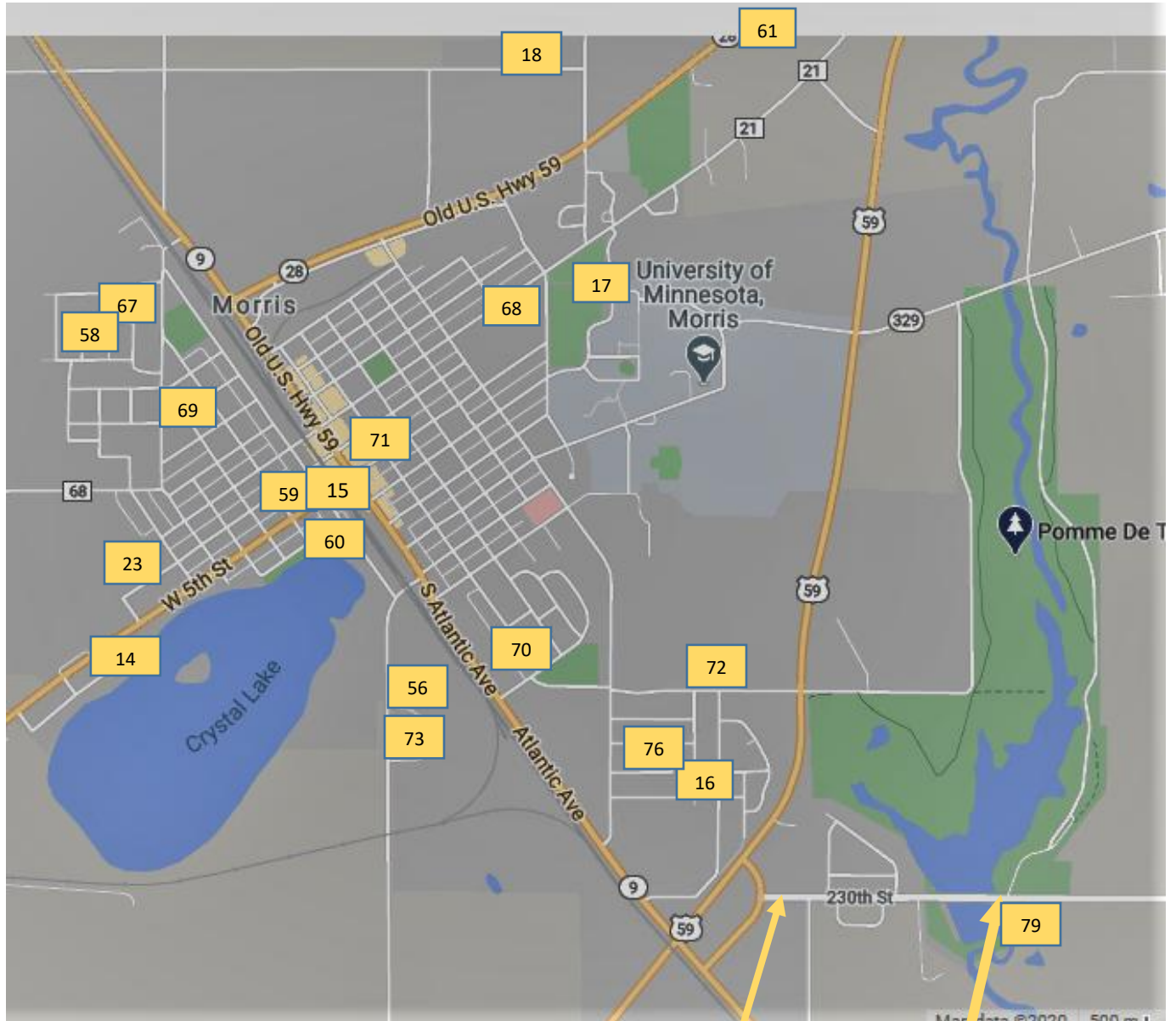
79. Doggie in the Window. Women of Today. Morris Dog Park, across from Pomme de Terre City Park. County Rd 10. Painted by Cindy Haffner. [See Morris Map](#)

Stevens County Map.

= 1 mile



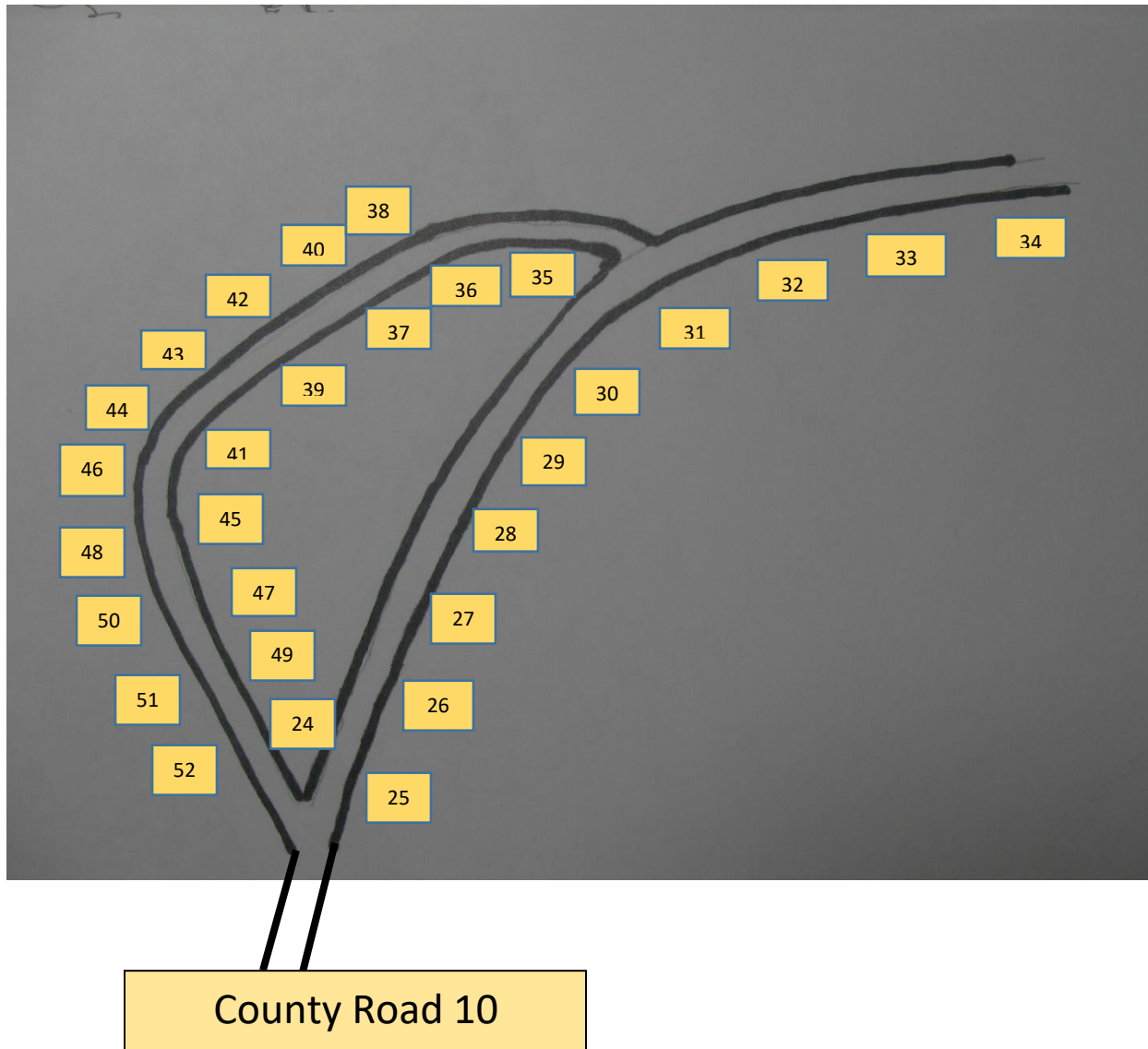
Morris Map.



County Road 10

24-52, see Pomme de Terre Park Camp Grounds map.

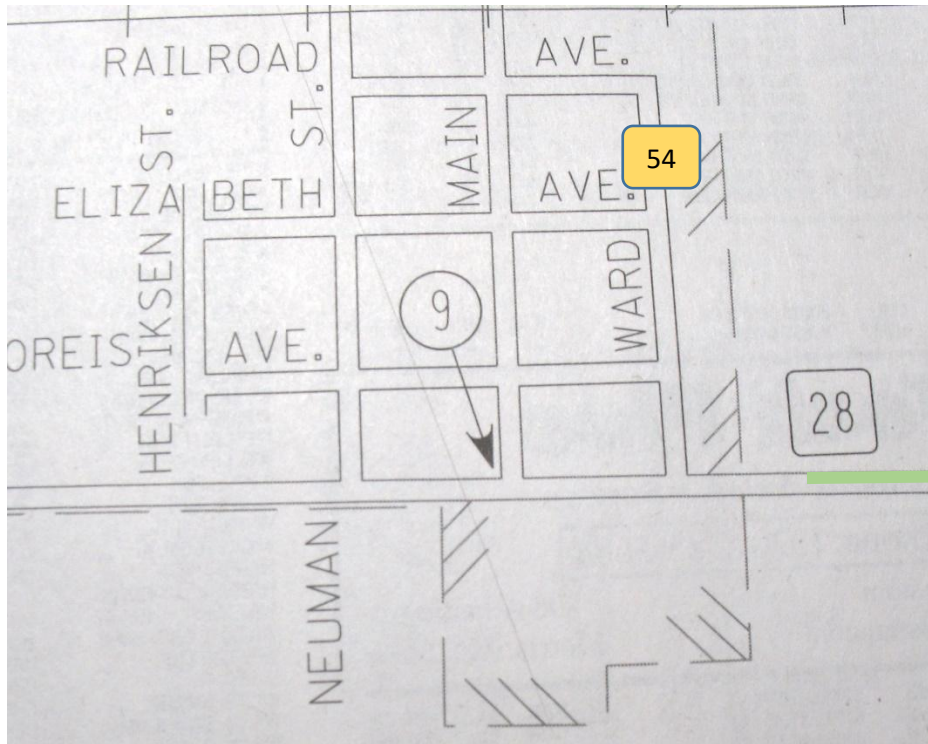
Pomme de Terre Park Camp Grounds map.



Chokio Map.

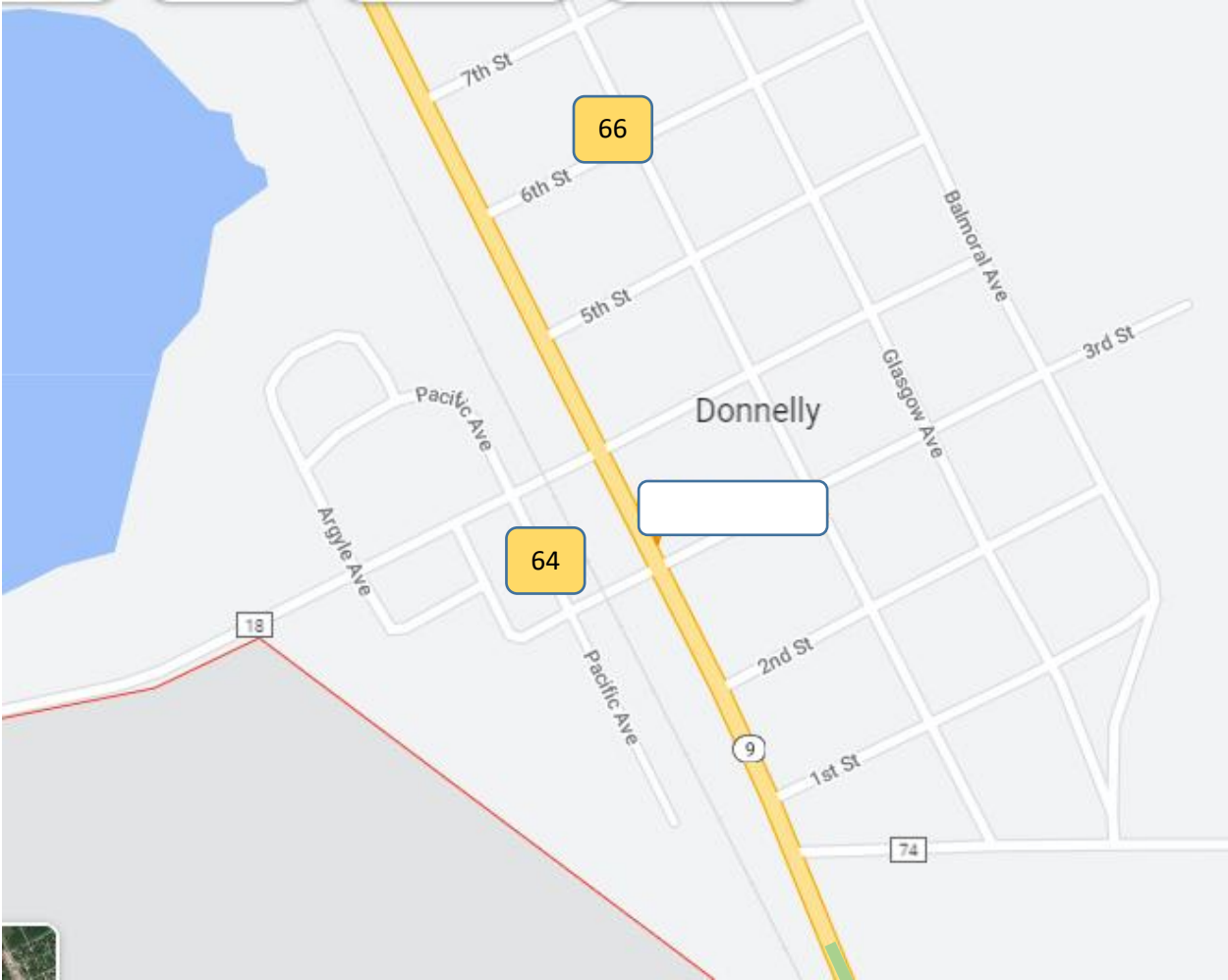


Alberta Map.



Donnelly Map

Edinburgh Ave.



Edinburgh

State Highway 9